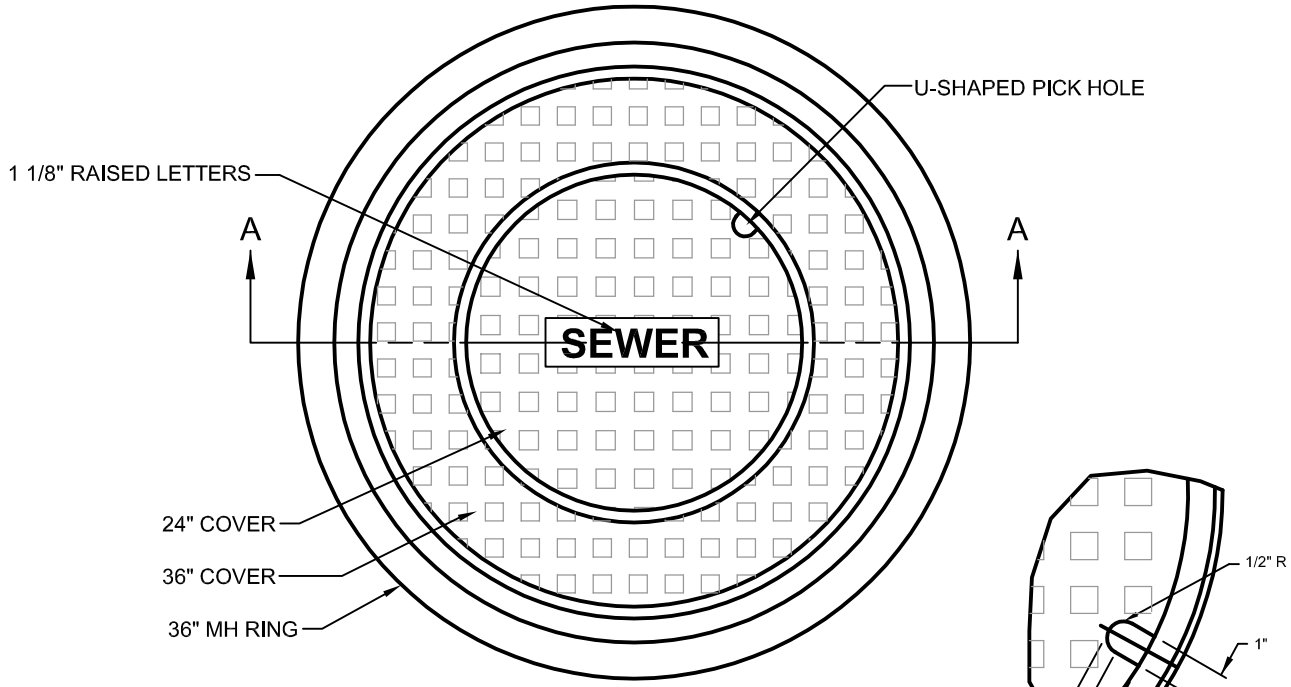
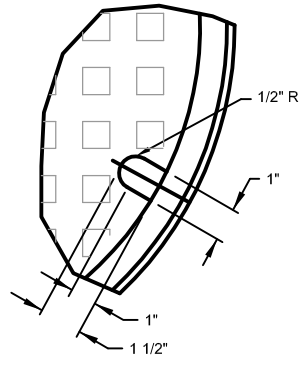


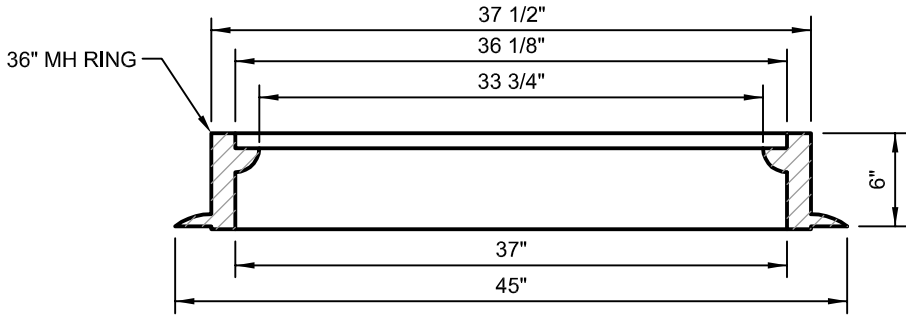
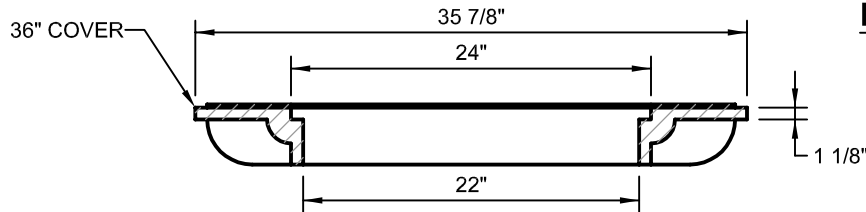
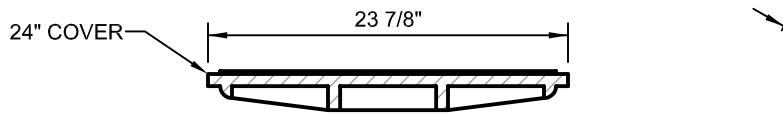
COPYRIGHT © 2016 SOUTHGATE WATER & SANITATION DISTRICTS



PLAN



PICK HOLE



SECTION A-A

NOTES:

1. CASTING SPECIFICATIONS: ASTM A-48 WITH A MINIMUM TENSILE STRENGTH OF 35 KSI (CLASS 35B).
2. ALL CASTINGS TO BE DIPPED IN ASPHALT BASED PAINT (OR APPROVED EQUAL).
3. CASTINGS SHALL BE AS SPECIFIED BELOW OR EQUAL:
 MANUFACTURERS _____ CAT. NO. _____
 CASTINGS, INC. MH7003624CI (SHOWN)

REVISED		 Southgate WATER & SANITATION DISTRICTS	SCALE
BY	DATE		NOT TO SCALE
			ISSUE DATE
			FEBRUARY 2016
			SHEET
			DRAWING NO.
			1 OF 1
			SS-08

36" x 24" DOUBLE RING AND COVER